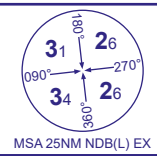


INSTRUMENT APPROACH CHART - ICAO

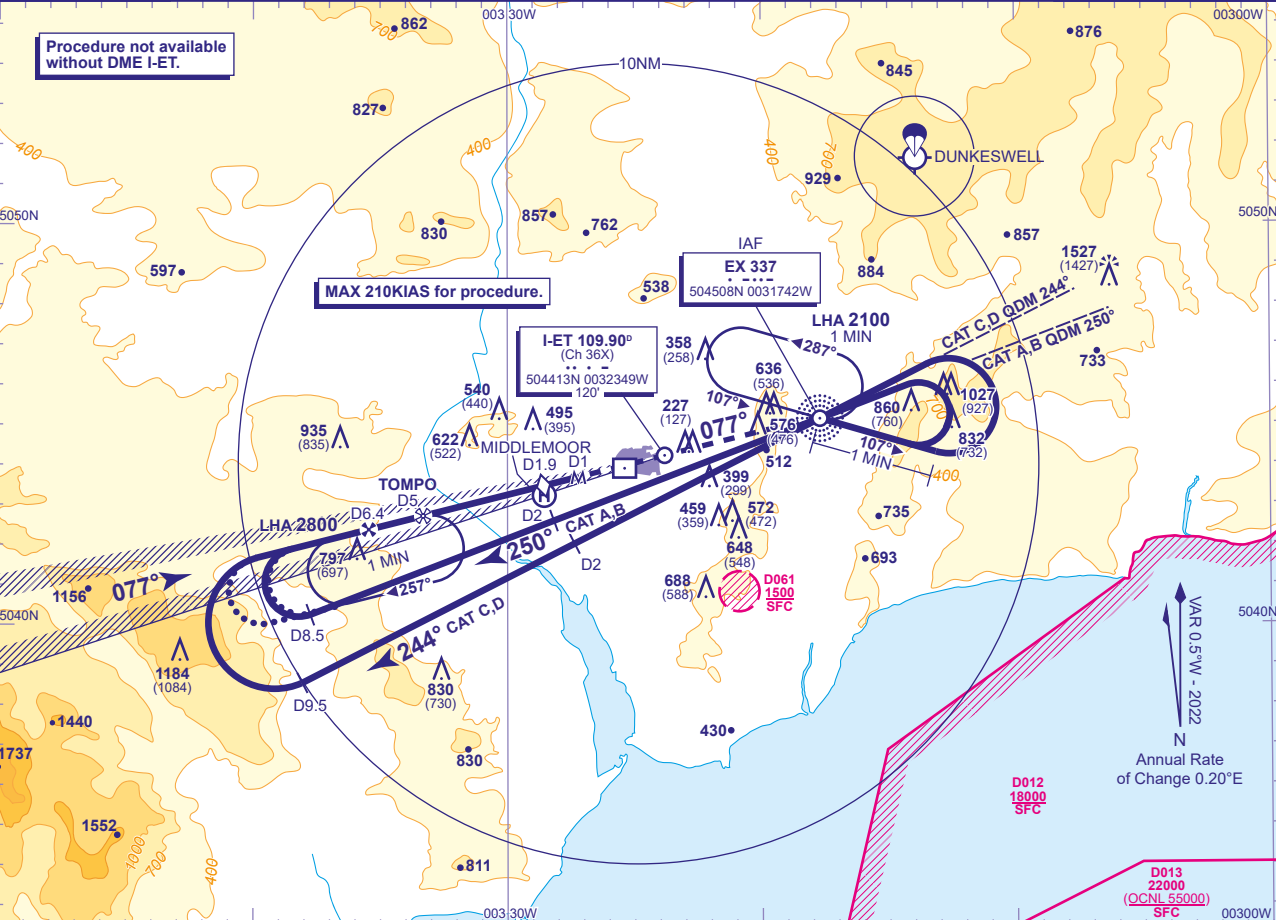
EXETER

LOC/DME/NDB(L)  
RWY 08  
(ACFT CAT A,B,C,D)



APP	128.980	EXETER APPROACH	AD ELEVATION	102
TWR	119.805	EXETER TOWER	THR ELEVATION	100
RAD	128.980, 123.580	EXETER RADAR	OBSTACLE ELEVATION	1527 AMSL (1427) (ABOVE THR)
ATIS	119.330	EXETER INFORMATION	BEARINGS ARE MAGNETIC	

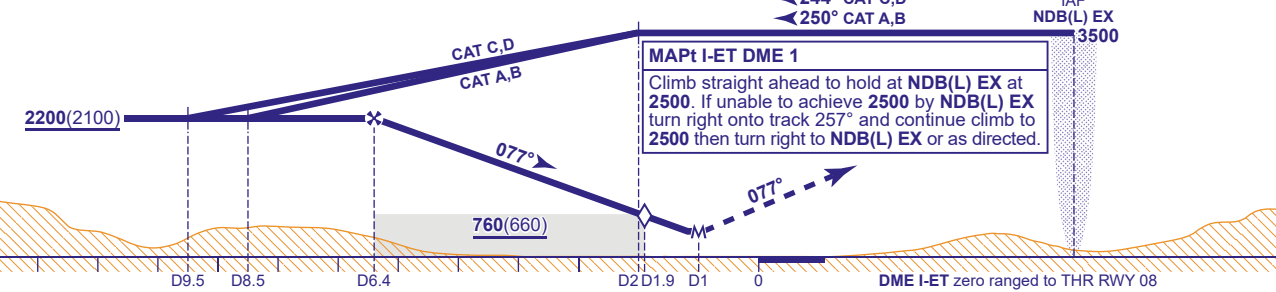
TRANSITION ALTITUDE  
3000



RECOMMENDED PROFILE Gradient 5.2%, 320FT/NM

DME I-ET	6	5	4	3	2	1.9 (SDF)
ALT(HGT)	2060(1960)	1740(1640)	1420(1320)	1100(1000)	790(690)	760(660)

Arrival **not below** MSA. Shuttle in hold if necessary to 3500.



Aircraft Category	A	B	C	D	Rate of descent	G/S KT	160	140	120	100	80
OCA (OCH)	Procedure	490(390)	490(390)	490(390)		FT/MIN	850	740	640	530	420
VM(C)OCA (OCH AAL)	Total Area	700(598)	900(798)	1090(988)	1090(988)						

**ALTERNATIVE PROCEDURE (FROM TOMPO HOLD)**  
Shuttle as required in the TOMPO hold to **3000**. Extend the outbound leg of the hold descending to **not below 2200(2100)**. At I-ET DME 8.5 (CAT A,B) or I-ET DME 9.5 (CAT C,D) commence right turn to establish on the localiser then continue as for basic procedure.

**NOTE 1** Lowest altitude to commence procedure from hold after a missed approach is **2500**.  
**2** ATC will normally require aircraft to hold not lower than **3500** at NDB(L) EX or **3500** at TOMPO.  
**3** TOMPO hold not available without DME I-ET.

CHANGE (11/23): VM(C)OCA(OCH AAL) CAT B.